

机型版本 Ver.B

Mark	Before modification	Modified by	Modify date	Checked by	Date	20210115
	After modification	Modified by	Modify date	Checked by	Date	
Drawer	Designer	Proofread by	Approved by	Version	A	

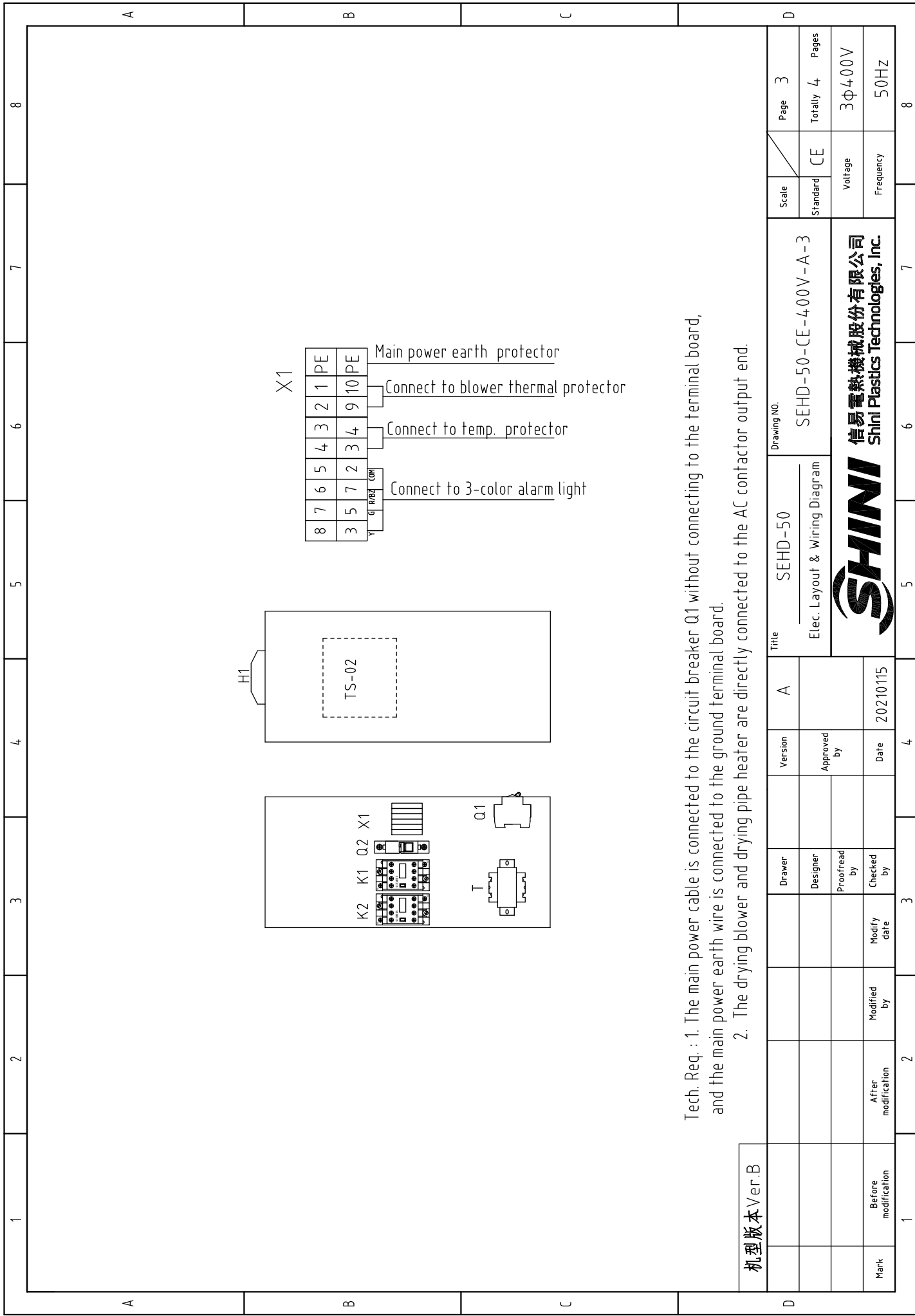
Title SEHD-50  
Main Circuit Diagram

Drawing NO. SEHD-50-CE-400V-A-1

Scale	Page 1
Standard CE	Totally 4 Pages
Voltage 3φ400V	Frequency 50HZ







Tech. Req. : 1. The main power cable is connected to the circuit breaker Q1 without connecting to the terminal board, and the main power earth wire is connected to the ground terminal board.  
 2. The drying blower and drying pipe heater are directly connected to the AC contactor output end.

机型版本 Ver.B

D	Title		SEHD-50		Drawing NO.		SEHD-50-CE-400V-A-3		Scale		Page 3		
	Elec. Layout & Wiring Diagram		Version		Approved by		Date		Standard		Totally 4 Pages		
Mark	Before modification		Modified by		Modify date		Checked by		Voltage		3Φ400V		
	After modification		Modified by		Modify date		Checked by		Frequency		50Hz		
SHINI		信易電熱機械股份有限公司		Shini Plastics Technologies, Inc.		20210115		SHINI		SHINI		8	

1		2		3		4		5		6		7		8		
NO.	Symbol	Name	Manufacturer	Type	Specification	Number	Material number	Remark								
1	Q1	Circuit breaker	TECO	BM-63C/3010S	10A 3P	1	YE40301003000									
2		Excitation release	---	MX	24V 50/60Hz	1	YE40024000000									
3	Q2	Circuit breaker	TECO	BM-63C/1003S	3A 1P	1	YE40100203000									
4	K1	Contact	SIEMENS	3RT6015-1AB01	24V 7A 50/60Hz 1NO	1	YE00601502500									
5	K2	Contact	SIEMENS	3RT6016-1AB01	24V 9A 50/60Hz	1	YE00601602500									
6	T	Transformer	JIUXIN	IN=400V/415V OUT=24V	80VA	1	YE7004-0006500									
7	PCB	Dryer controller/PCB	YuYun	TS-02(24VAC)(with comm.)	24V 50/60Hz	1	YE80022401200									
8	S1	温度保护器/Overheat protector	EG0	---	115~320 °C	1	BH90115000150	Cancel								
9	S1	Overheat protector	---	---	180 °C	1	---	Increase(1)								
10	S2	Thermocouple	SHINI	KTYPE	---	1	---	(1)								
11	S3	Comm. interface board RS-485(Dsub-9pin connector)	---	---	---	1	YE9004-8501200									
12		Shell RS485(SAL-700G-A-19)ver.0	---	---	---	1	YR4004-8500000									
13	M1	Blower	---	---	0.12kW 400V 50HZ	1	---	(1)								
14	EH1	Heater	SHINI	---	3.9kW 400V	1	---	(1)								
15	X1	Spring wiring terminal SK2.5(Honeywell)	Honeywell	SK2.5	2.5mm <sup>2</sup>	-2- 8	YE60002503200	Revised								
16		Spring wiring terminal SK2.5(Honeywell)	Honeywell	GK2.5PE	2.5mm <sup>2</sup> PE	1	YE60002503400									
17		Terminal fittings E/GK series (Honeywell)	Honeywell	---	GK series	3	YE600000003900									
18	H1	3-color alarm lamp	SHINI	Red. yel. green+ buzzer	24V AC/DC	1	BL90002401520	Increase								
C																
D																
机型版本 Ver.B Notes: (1)Materials in the control box;																
		Drawer	Version	Title		Drawing NO.		Scale	Page							
		Designer	Approved by	SEHD-50		SEHD-50-CE-400V-A-4		Standard	Totally							
		Proofread by	Date	Electrical parts List 1				CE	4							
		Checked by	20210115	SHINI		信易电热机械股份有限公司		Voltage	3Φ400V							
Mark		After modification	Modified by	Modify date			Frequency		50HZ							
1	2	3	4	5	6	7	8									